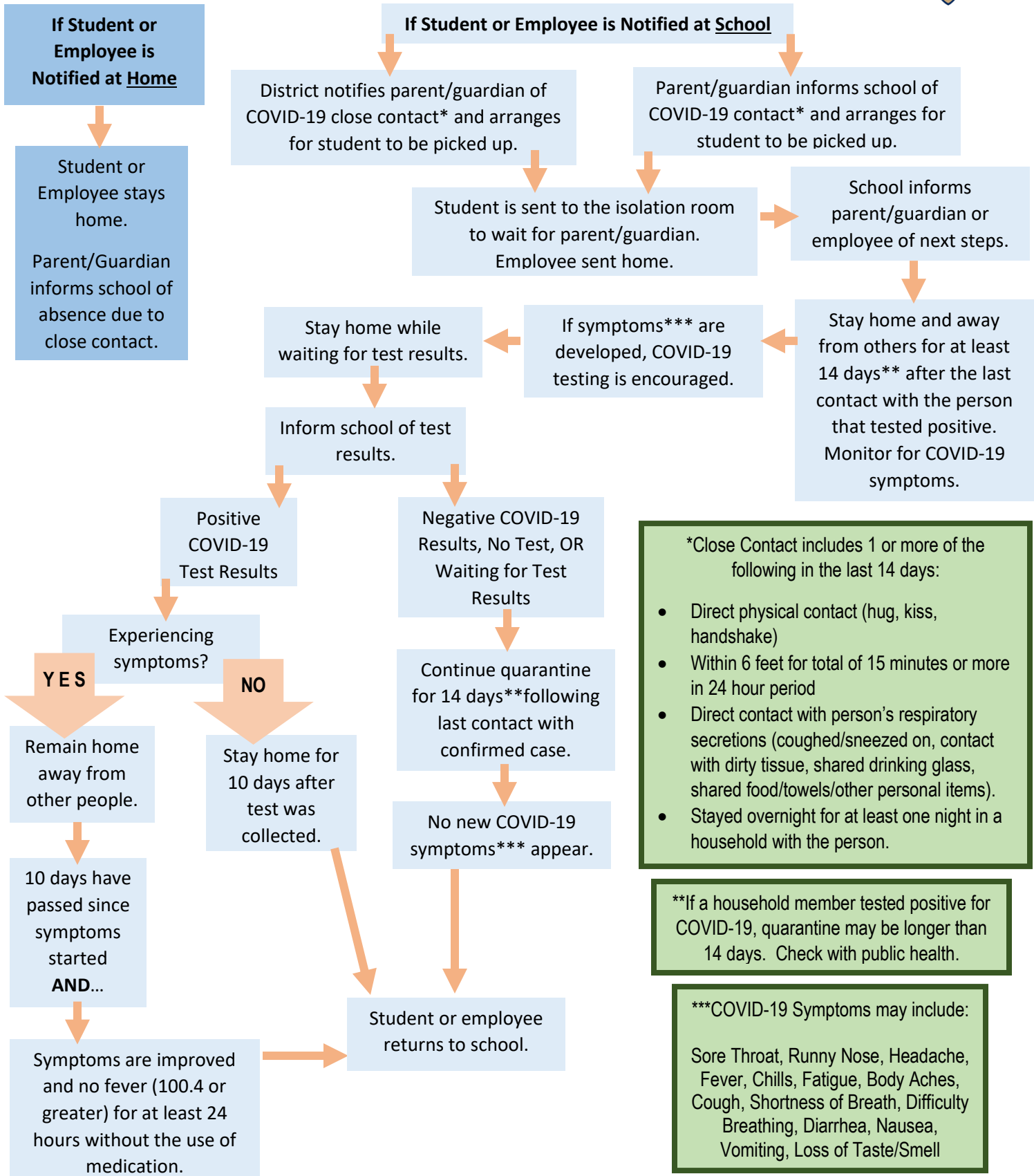


STUDENT OR EMPLOYEE CLOSE CONTACT WITH CONFIRMED COVID-19 INDIVIDUAL



***Close Contact includes 1 or more of the following in the last 14 days:**

- Direct physical contact (hug, kiss, handshake)
- Within 6 feet for total of 15 minutes or more in 24 hour period
- Direct contact with person's respiratory secretions (coughed/sneezed on, contact with dirty tissue, shared drinking glass, shared food/towels/other personal items).
- Stayed overnight for at least one night in a household with the person.

****If a household member tested positive for COVID-19, quarantine may be longer than 14 days. Check with public health.**

*****COVID-19 Symptoms may include:**

Sore Throat, Runny Nose, Headache, Fever, Chills, Fatigue, Body Aches, Cough, Shortness of Breath, Difficulty Breathing, Diarrhea, Nausea, Vomiting, Loss of Taste/Smell